

# Oracle Account Reconciliation Cloud Service

Oracle Account Reconciliation Cloud is a purpose-built solution in the Cloud designed to manage the global reconciliation process. It provides real-time visibility into the performance of reconciliations, ensuring that all reconciliations prepared are properly qualified. It also helps companies streamline and optimize performance by automating certain reconciliation tasks, including high volume transactional reconciliations. Account Reconciliation Cloud includes two modules: Reconciliation Compliance and Transaction Matching.

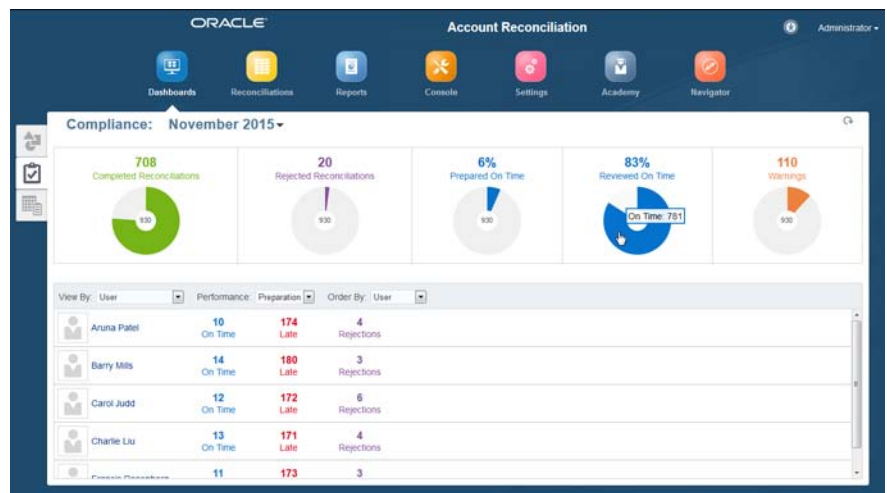
## KEY BUSINESS BENEFITS

Efficiently manage and improve global account reconciliation by exploiting automation and comprehensively addressing security and risk typically associated with the process.

- Improved finance staff efficiencies through automation of key reconciliation functions
- Reduced frequency of reconciliation without compromising accuracy or increasing risk
- Collaboration assists getting reconciliations done quickly and accurately
- Clear responsibilities and timescales
- Shrink the time it takes for the financial close
- Trust and reliability that the numbers are accurate
- No need to change existing systems
- Peace of mind that important and confidential data is only visible to authorized users

## Reconciliation Compliance

Reconciliation Compliance manages the tracking and performance of reconciliations. With Reconciliation Compliance, organizations ensure accounts are properly reconciled using the correct format and containing thorough and complete justifications. Approval workflow captures evidence of sign-off and email notifications keep the entire team on track. The integrated document repository secures access to supporting documentation, providing global auditability and access while ensuring reconciliations are never lost or misplaced. The Reconciliation Compliance risk-based preventive control structure ensures organizations can optimize workflow without sacrificing quality.



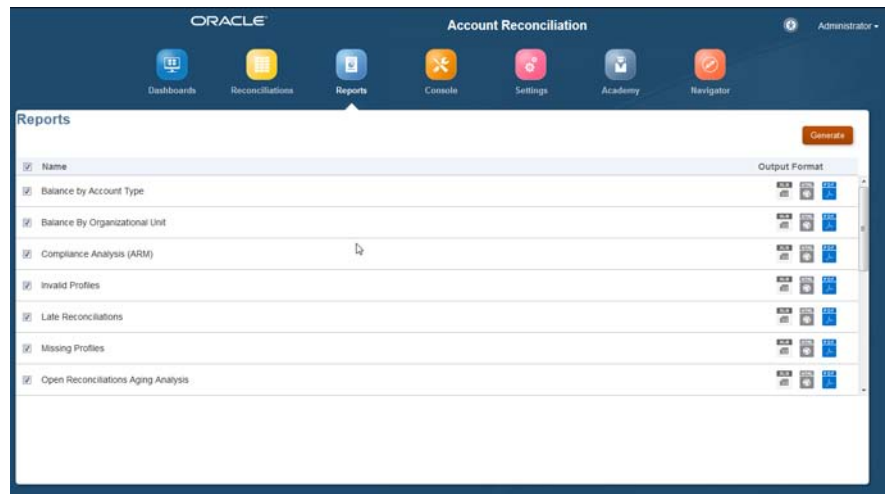
Compliance dashboard helps monitor how the company is doing based on defined processes and deadlines

**RECONCILIATION COMPLIANCE KEY FEATURES**

- Balance integration using with a variety of ERP systems
- Mapping features to summarize low-level balances to the level appropriate for reconciliation
- Configurable auto reconciliation rules based on user-defined filters
- Easy to use features for maintaining reconciliation assignments, including mass update and import capabilities
- Configurable frequencies and unlimited levels of approval
- Flexible formats adaptable to each type of account
- Powerful filtering and reporting capabilities

**Auto-reconciliations**

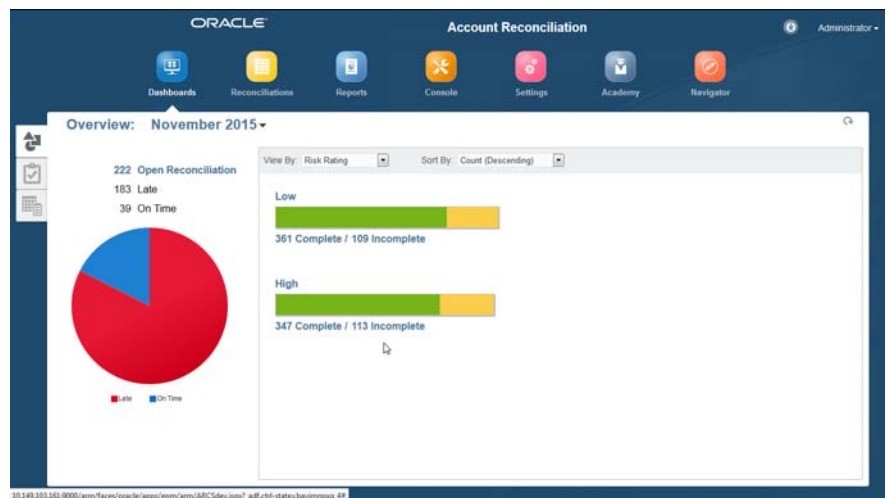
Most organizations process thousands of reconciliations per year. Often times a percentage of these reconciliations are zero balance, low threshold or other minor risk types which could easily be done by the system instead of an actual user. ARCS provides the ability for customers to define their own automatic reconciliation rules and have the system process these at the beginning of the cycle. The efficiency, and accuracy, gain of leveraging this feature in the system can be quite significant for most customers.



Prebuilt reports are available for a variety of reporting needs.

**Flexible formats**

Formats are a key component of the reconciliation process. Each organization has a different strategy for how many and how detailed their formats need to be based on their goals. ARCS offers prebuilt formats but also includes the ability for customers to build custom formats based on their internal needs and business practices. Whether you want to leverage best practice prebuilt formats or go with custom developed ones is a business choice that the software supports out of the box. This flexibility is also key for growing organizations that can leverage the software to evolve their processes.



**TRANSACTION MATCHING KEY FEATURES**

- Auto match engine capable of matching more than a million transactions a minute
- User friendly interactive matching for confirming suggested matches and creating manual matches
- Flexible matching rules supporting 1 to 1, 1 to many, many to 1, and many to many rule types
- Robust data enrichment and normalization functions improve match success rate
- Automated adjustment creation based on variance values
- Period-end balancing reports provide evidence of reconciliation at a point in time and satisfy compliance requirements

**ORACLE ENTERPRISE PERFORMANCE MANAGEMENT APPLICATIONS**

Oracle’s EPM Cloud and on-premises applications provide market leading functionality with fast time to value, simplicity of configuration and pre-built content for deeper integration and easy extensibility.

**RELATED PRODUCTS**

Oracle enterprise performance management applications provide the following capabilities:

- Strategy Management
- Financial Close and Reporting
- Planning, Budgeting and Forecasting
- Profitability and Cost Management
- Enterprise Data Governance

**OTHER RELATED PRODUCTS**

- Oracle Planning and Budgeting Cloud Service
- Oracle Enterprise Performance Reporting Cloud Service
- Oracle Fusion Financials Cloud Service

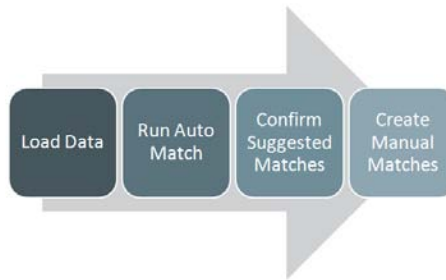
Pre-built dashboards for monitoring status, aging, performance metrics, and compliance metrics.

**Reporting/Analytics**

There are two key aspects to the reconciliation cycle – operational and compliance. The operational aspect is about how the process is working, are reconciliations getting done, what is the aging, etc. The compliance aspect focuses more on how the organization is doing versus policies and procedures. It allows you to analyze the quality of the process not just the quantity. ARCS provides out of the box dashboards that focus on both areas. The dashboards enable process monitoring, immediate action on errors and delays and process analysis to evaluate and improve close-cycle effectiveness.

**Transaction Matching**

Transaction Matching automates performance of transaction intensive reconciliations, supporting two source reconciliations processes like intercompany and bank reconciliations, as well as single source reconciliations like high volume accrual and suspense accounts. The matching process begins with the import of transactions,



followed by the execution of the auto match process, confirmation of suggested matches, and creation of manual matches. Periodically, according to business needs, accounts are “balanced” through generation of reconciliation reports, providing the evidence needed to satisfy reconciliation compliance.

Match rules are defined by Administrators for each Reconciliation Type and can take advantage of calculated attributes optimized for performance. These attributes are created using functions designed to normalize or enrich the original data and provide significant value through higher auto match rates.

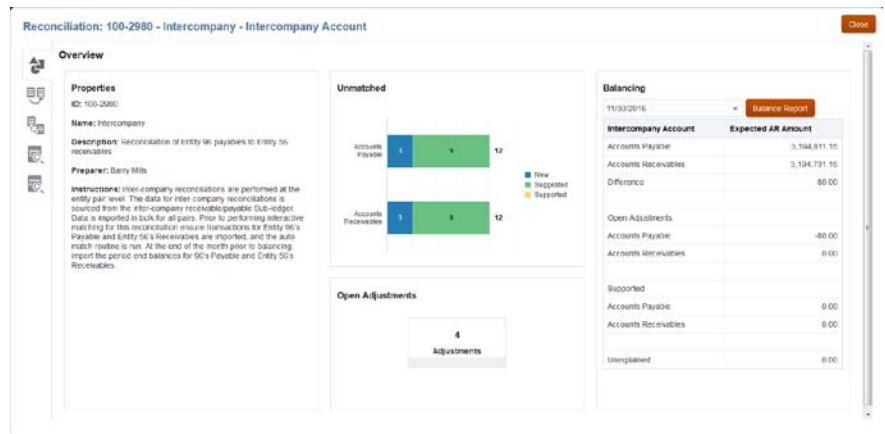
Reconciliation: 100-2980 - Intercompany - Intercompany Account

Doc Date	Invoice	AP Amount	Expected AR Amount	Currency	DocumentNo	Payment Date
10/15/2015	6000028368	-5,721.03	5,721.03	USD	7060012893	1/11/2015
<b>Total</b>			<b>5,721.03</b>			
<b>Variance</b>			<b>0.00</b>			

Doc Date	Invoice	AR Amount	Currency	Customer No. (Local System)	Due Date	A/R UNIT Name	A/R TBR Code	AR CoCd	A/P Region	A/P TBR Code	AP CoCd	A/P CoCd
10/15/2015	IA53378L	5,721.03	USD	2000000296	12/1/2015	ACRBL STAFF	00103	103	OSA	005E4	SAL	
<b>Total</b>		<b>5,721.03</b>										
<b>Variance</b>		<b>0.00</b>										

Interactive matching supports confirmation of suggested matches or creation of manual matches



Reconciliation Summary for monitoring progress within reconciliations

## Oracle Cloud

The Oracle Cloud is an enterprise cloud for business. The Oracle Cloud offers self-service business applications delivered on an integrated development and deployment platform with tools to rapidly extend and create new services. With predictable subscription pricing, our cloud delivers instant value and productivity for end users, administrators and developers.





Customers are adopting cloud computing in many different ways. Oracle's strategy is to offer customer choice and flexibility with the broadest, most complete portfolio of cloud services and products that enable the cloud. The applications and databases deployed in the Oracle Cloud are portable and can be easily moved to/from a private cloud or on premises environment. In addition, Oracle Cloud provides an extensive array of timely and relevant 3rd party content to enrich applications. Finally, our cloud services are built on the Oracle Exalogic Elastic Cloud and Oracle Exadata Database Machine, together offering a platform that delivers extreme performance, redundancy, and scalability.

## CONTACT US

For more information about Oracle Account Reconciliation Cloud Service, visit [oracle.com](http://oracle.com) or call +1.800.ORACLE1 to speak to an Oracle representative.

**ORACLE**

## CONNECT WITH US

-  [blogs.oracle.com/oracle](http://blogs.oracle.com/oracle)
-  [facebook.com/oracle](http://facebook.com/oracle)
-  [twitter.com/oracle](http://twitter.com/oracle)
-  [oracle.com](http://oracle.com)

## Integrated Cloud Applications & Platform Services

Copyright © 2016, Oracle and/or its affiliates. All rights reserved. This document is provided for information purposes only, and the contents hereof are subject to change without notice. This document is not warranted to be error-free, nor subject to any other warranties or conditions, whether expressed orally or implied in law, including implied warranties and conditions of merchantability or fitness for a particular purpose. We specifically disclaim any liability with respect to this document, and no contractual obligations are formed either directly or indirectly by this document. This document may not be reproduced or transmitted in any form or by any means, electronic or mechanical, for any purpose, without our prior written permission.

Oracle and Java are registered trademarks of Oracle and/or its affiliates. Other names may be trademarks of their respective owners.

Intel and Intel Xeon are trademarks or registered trademarks of Intel Corporation. All SPARC trademarks are used under license and are trademarks or registered trademarks of SPARC International, Inc. AMD, Opteron, the AMD logo, and the AMD Opteron logo are trademarks or registered trademarks of Advanced Micro Devices. UNIX is a registered trademark of The Open Group. 0316